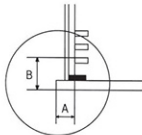
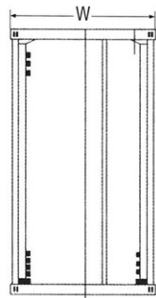
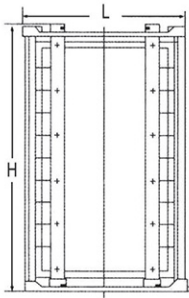
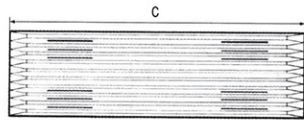
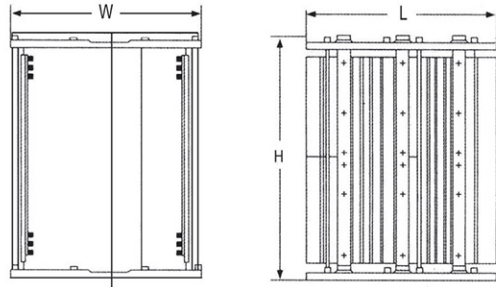
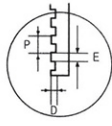


# MAGAZINE RACK-NTC SERIES



REFERENCE POSITION



GUIDE RAIL



## ■ Specifications

MODEL NO.	TYPE		W	L	H	AJ	A	B	C	D	E	P	WEIGHT (Kg)
		TYPE2											
NTC-091	60℃	120℃	320	355	580	50~258	34	35	330	3	3	10	4.8
NTC-092	60℃	120℃	320	355	570	50~258	34	35	330	3	3	10	4.8
NTC-093	60℃	120℃	460	535	575	60~380	34	35	535	4	5	10	7
NTC-094	60℃	120℃	370	350	570	98~308	34	35	330	3/5	3/5	10	5
NTC-095	60℃	120℃	380	480	575	77~318	34	35	480	3	5	10	7
NTC-096	60℃	120℃	400	460	575	68~334	34	35	460	3	5	10	7
NTC-097	60℃	120℃	320	355	570	50~258	34	35	330	5	5	10	6
NTC-098	~250℃		320	355	570	50~250	34	35	335	3	3	10	6
NTC-099	60℃	120℃	320	620	575	60~236	34	35	600	4	5	10	8.5
NTC-100	60℃	120℃	530	535	575	150~460	34	35	535	4	5	10	8.5
NTC-101	60℃	120℃	530	620	575	150~460	34	35	600	4	5	10	8.5